

PA-Bioeconomy

Torfi
Johannesson

PA-Bioeconomy – Concrete actions

Blue Bioeconomy

- *Stop eutrophication of the Baltic Sea and waterways*
 - *reduce run-off*
 - *capture nutrients*
- *Build new sustainable blue bioeconomy businesses*

Wood biomass

- *Wood in construction*
- *Forestry and biodiversity*
- *Special focus on East-Baltic*

Sustainable food systems

- *Increase local production of proteins for food and feed (biorefineries, algae, protein crops...)*
- *Local food (and tourism)*
- *Multi Resistant Bacteria*
- *Healthy diets (for the Planet and the Body)*





Trend analysis for bioeconomy in the BSR, NW Russia, and North Atlantic

Trend descriptions Ver. 2.0

Nordic Sustainability | January 2020

1. Trends update

Updated trends list

Macro trends influencing the bioeconomy

1. The world is going digital
2. Green new deals
3. Investors are going green
4. Urbanization and changing demographics
5. Electrification of the energy system

Bioeconomy trends

1. Closing the industrial loops
2. New protein sources
3. Algae on the rise
4. Storytelling adds value
5. Biofuels replacing fossils

ENABLING

Digitalization adding value to the bioeconomy
Shift in consumer behaviour
The rise of cheap clean power

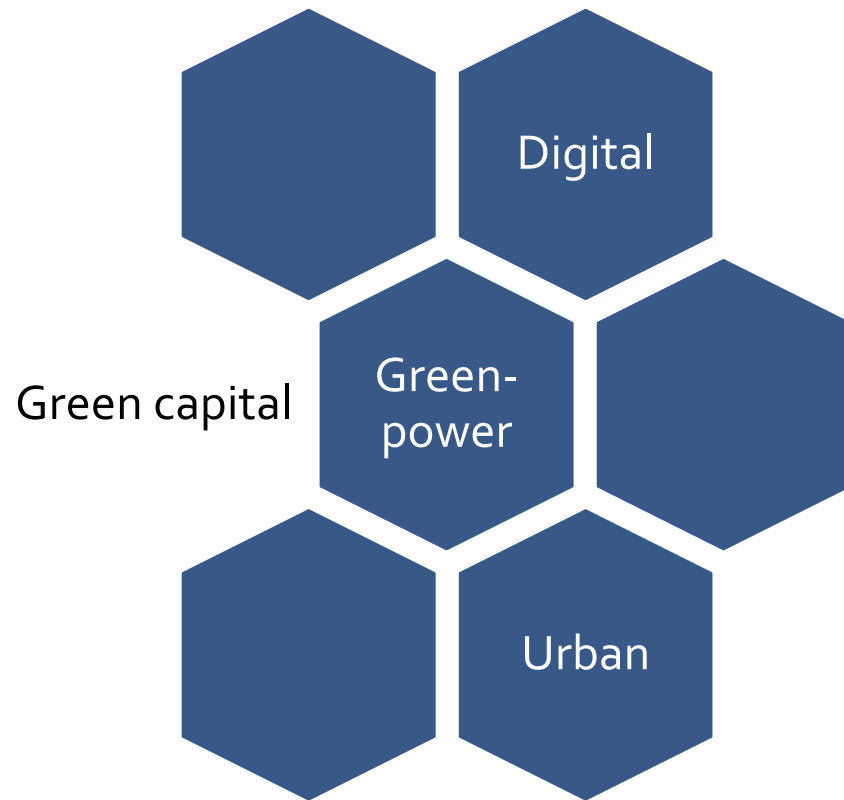
VALUE STREAM

Industrial side streams as a resource
More circular and cascading business models
Growing appreciation of ecosystem services
Businesses driving social impact

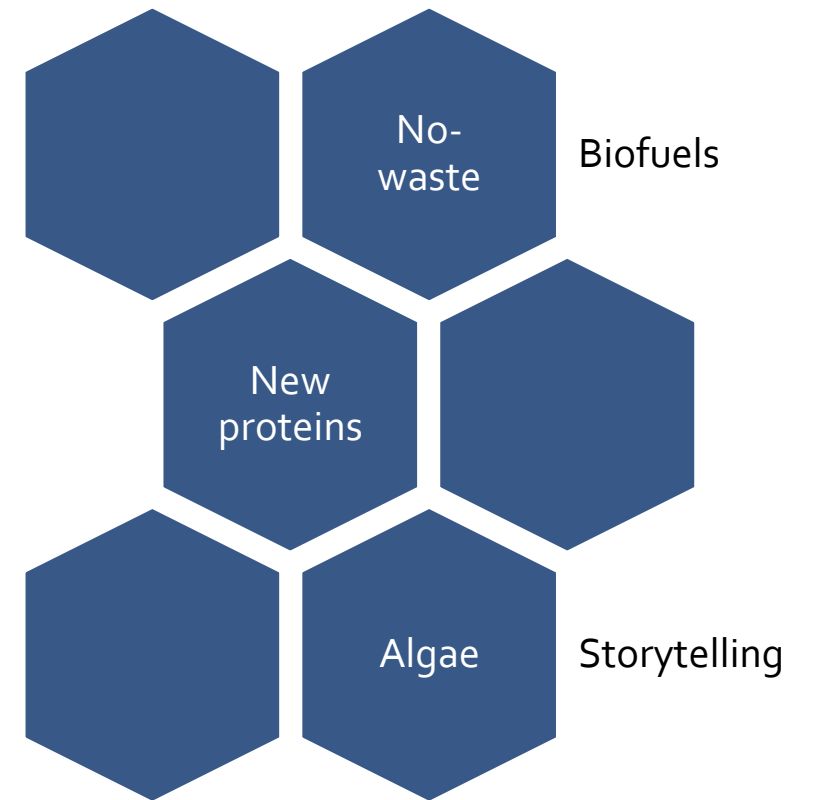
RESOURCE STREAM

Development of alternative proteins
Diversification of value creation in forests
New opportunities for plant-based marine resources
Uptake in bio-based construction materials

Macro trends

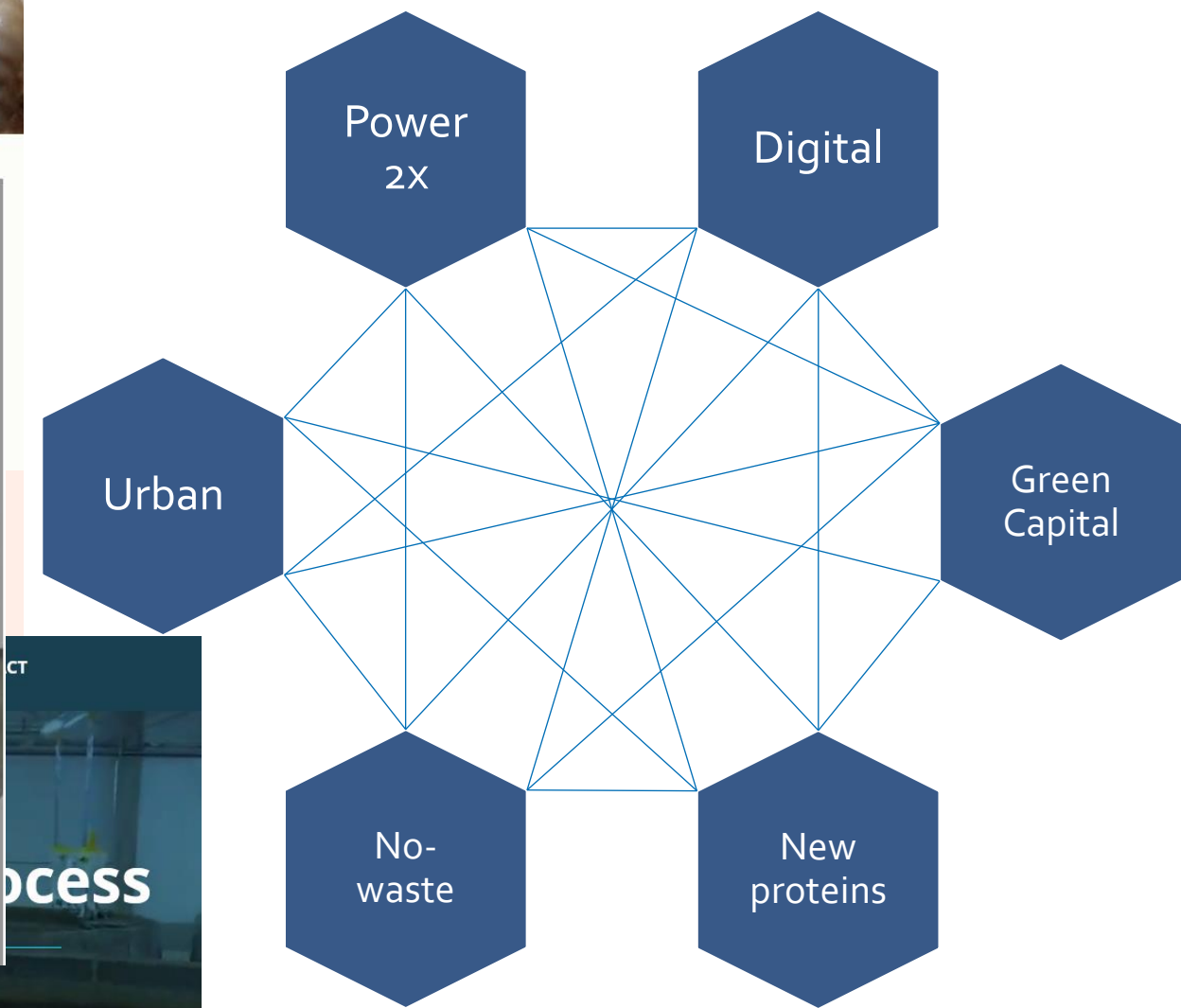


Bioeconomy trends





**FISH FARMING
ON DRY LAND**



The role of PA-Bioeconomy

We have:

- Soft powers
- Broad agenda
- A mandate
- Direct contact with policy makers
- Direct contact with projects

We can:

- Create meeting platforms
 - for projects
 - for projects and policy makers
 - for programs and policy makers
- Assist programs in aligning program priorities and challenges

In a fast paced environment we must coordinate on the go.



Thanks.

