



BIOBORD
PLATFORM

BIOBORD NETWORK & PLATFORM

Connecting Bioeconomy
Developers



Interreg
Baltic Sea Region



EUROPEAN UNION

EUROPEAN
REGIONAL
DEVELOPMENT
FUND



“Our mission is to bring together bioeconomy developers to a joint table to solve global and local challenges with bioeconomy innovations. Biobord connects bioeconomy innovation networks around the Baltic Sea Region to share ideas, find partners and work together to create business opportunities in bioeconomy. Together we build knowledge and raise awareness on sustainable and viable bioeconomy business potential in Baltic Sea Region.”

-Biobord.eu

Network of Bioeconomy Regions and Innovation Hubs

Central Finland

Inland County in Norway

Świętokrzyskie Voivodeship in Poland

Vidzeme in Latvia

Estonia



Central Finland is known for a long tradition in forest-based bioeconomy and strong research and education field.

Partners

JAMK University of Applied Sciences
Regional Council of Central Finland
SSYP Kehitys Ltd.



Inland (Norway) is a national leader in bioeconomy with vast agricultural and forest resources, active research and business clusters.

Partners

Inland Norway University of Applied Sciences

Inland County Council

Tretorget Ltd



Świętokrzyskie Voivodeship
(Poland) is known for food & wood
processing industries and health
tourism.

Partners

Regional Science and Technology
Centre

Świętokrzyskie Voivodeship

Foundation for Education and Social
Dialogue PRO CIVIS



BIOBORD
PLATFORM

Vidzeme (Latvia) is a national leader in bioeconomy with specialised knowhow on high-value added agricultural production and application of new technologies.

Partners

Institute for Environmental Solutions

Vidzeme Planning Region

Latvian Food and Bioeconomy Cluster



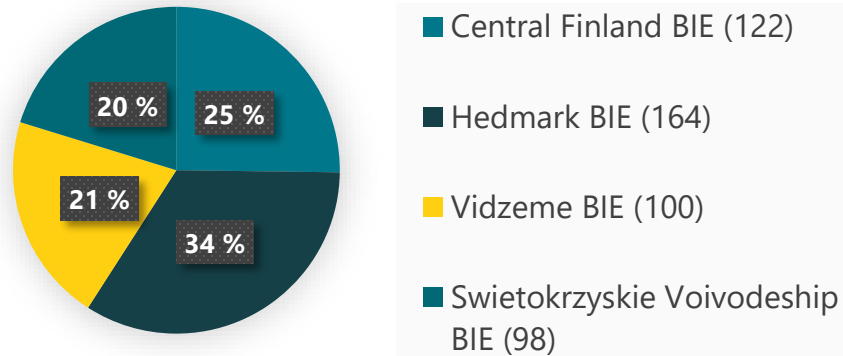


“The potential
transnational bioeconomy innovation ecosystem
comprises of 484 innovation service provider
organizations connected via the four hubs.”

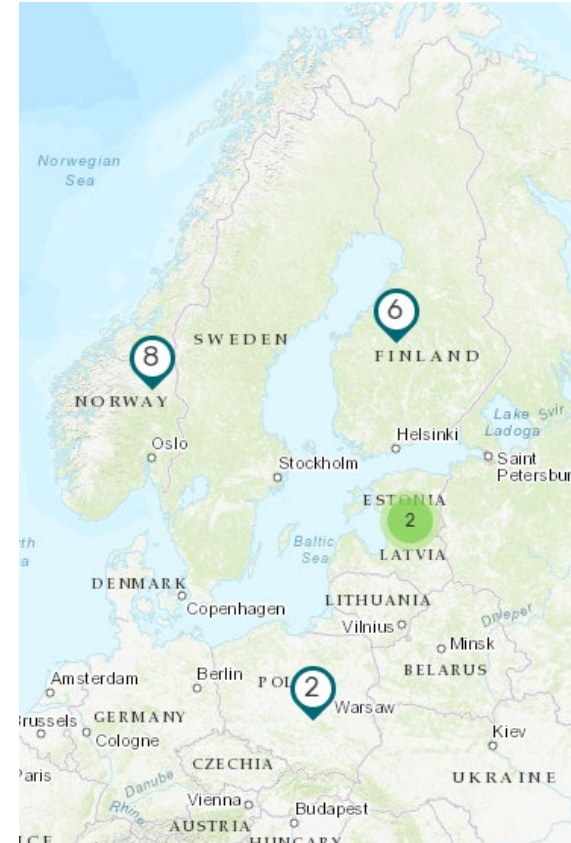
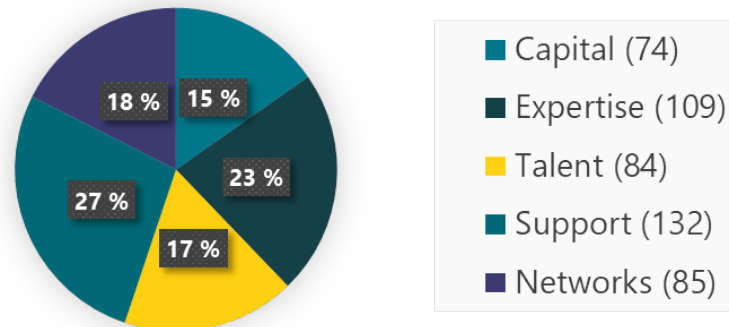
*Results of the Mapping of Regional Innovation Systems in RDI2CluB
project.*

Network Potential of Biobord Partnership

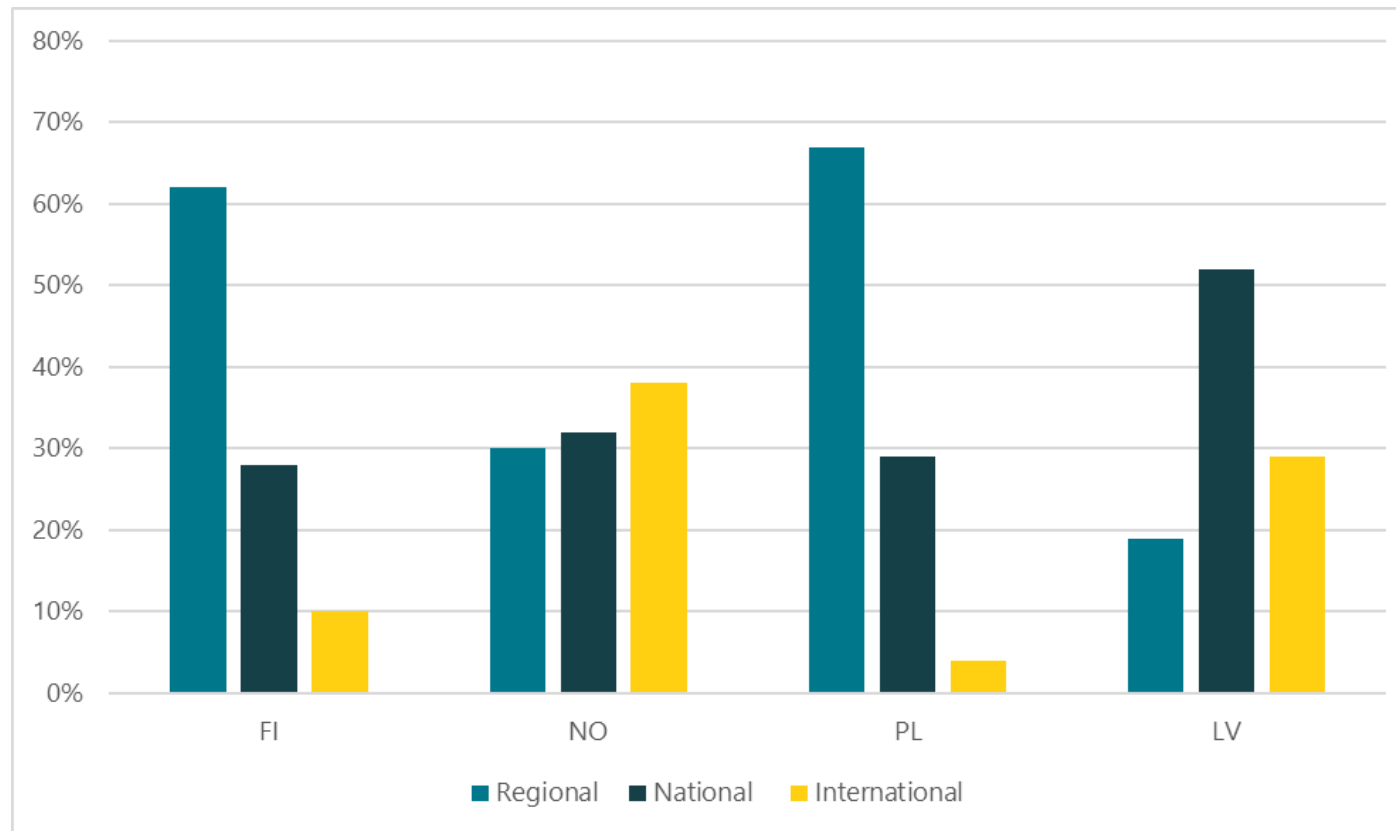
Biobord Network



Bioeconomy Innovation Ecosystem



Network Potential of Biobord Partnership



Geographic scope of the networks of the Hubs with percentage of network partners on regional, national and international spheres.

(Mapping RIS data collected in 2018, RDI2CluB)

Platform at Biobord.eu

Landing page & news catalogue

Network map & service catalogue

Forum

Document Management System



BIOBORD
PLATFORM



Landing Page & News Catalogue

Landing page features **news** from the network members, the network's **mission statement** and the highlights of the Biobord **network's results and impact**.

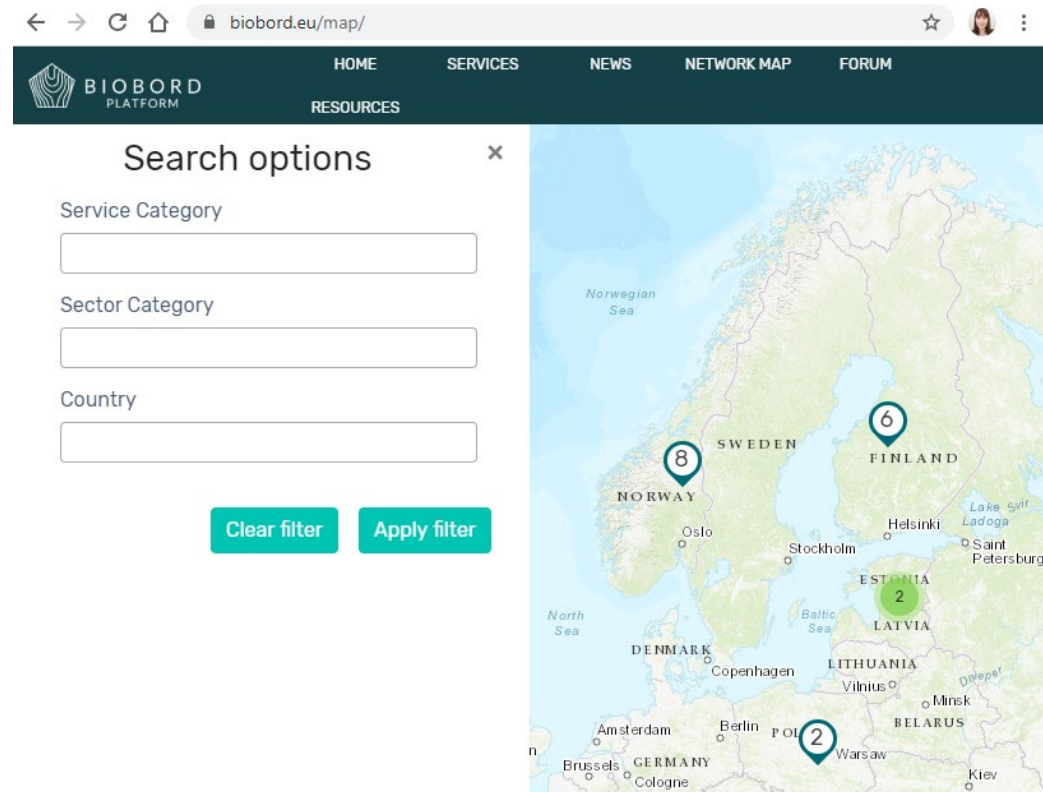
Network members can update the News stories directly via **Wagtail CMS**.



Network Map & Service Catalogue

Network map and service catalogue feature the **Hubs, Organisations** and **Innovation Services** connected to the Biobord network.

Network members can update the service descriptions directly via **Wagtail CMS**.



Forum – Open Biobord Forum

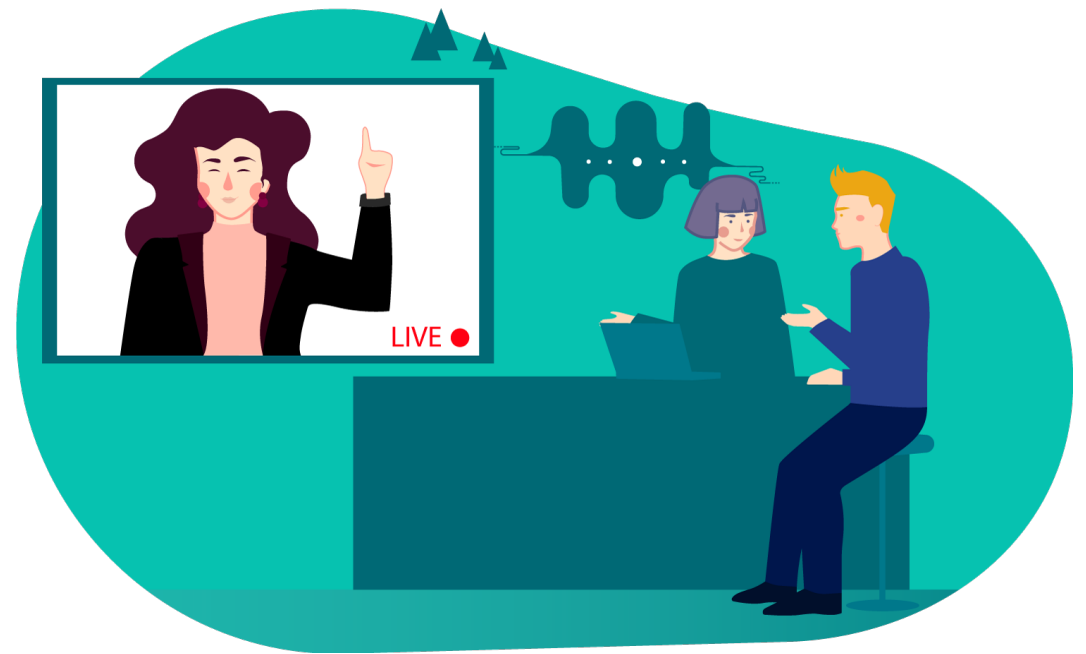
Open Biobord Forum is a networking, matchmaking and teambuilding area for bioeconomy developers to find new opportunities, expertise and partners.



BIOBORD
PLATFORM

Forum – Biobord On Stage

Biobord on Stage provides you information about the online events of Biobord Network. The events are announced in this discussion area.



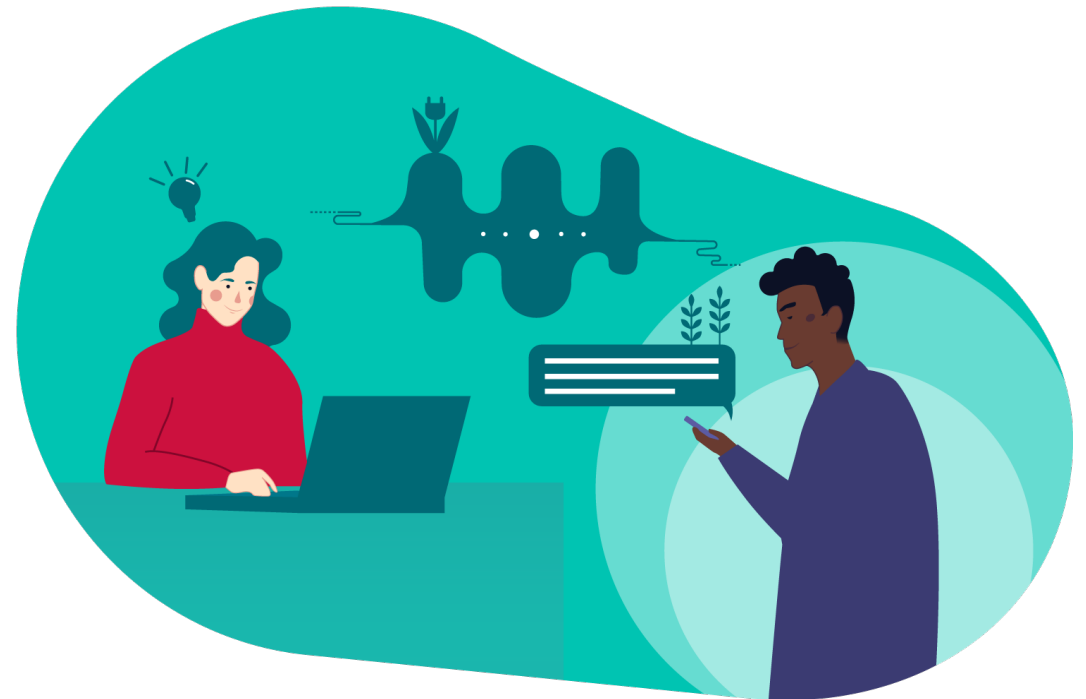
BIOBORD
PLATFORM

Forum – Biobord Network Actions

Biobord Network Actions is for international co-operation in bioeconomy development.

The forum is for planning and implementing joint international actions for boosting bioeconomy development and innovations.

In addition, we welcome all Biobord users to share their best practices, experiences & knowledge on bioeconomy with the international network.



BIOBORD
PLATFORM

Forum – Tags & Search Features

Topics on Forum can be searched and identified based on '**Tags**'. Each user can set **notifications** or **tracking** functions to follow the topics of their interest.

Matchmaking tags

explore-our-network x 1	call-for-action	call-for-expertise
call-for-partner	call-for-solution	call-for-support
explore-an-innovation	explore-funding-opportun...	explore-my-idea
explore-my-profile	explore-our-project	explore-our-research
explore-our-service		

Regional tags

central-finland	estonia	inland
swietokrzyskie	vidzeme	

Thematic tags

circular-bioeconomy x 1	agriculture-and-food	forest-bioeconomy
natural-resource-manage...	nature-based-services	renewable-energy
sustainable-development		



BIOBORD
PLATFORM



Forum – User information

All users and their activeness on the Forum can be followed under **'Users'**.

The users can introduce themselves in their **profile**, set a **profile picture**, background picture and e.g. different websites under their profile.

HOME

SERVICES

NEWS

NETWORK MAP

FORUM

RESOURCES

Biobord

Week JAN 14 - JAN 21

filter by username

171 users

Received

Given

Topics

Replies

Viewed

Read

Visits

riikkakumpulainen

Central_Finland

10

10

4

3

19

50

5

Ingrid Ingrid Hvidsten Gabrielsen

Inland

0

1

0

0

5

46

5

Inese Inese Sujja Markova

Vidzeme

4

2

0

3

3

11

5

Anna Anna Aalto

Central_Finland

11

8

3

6

10

40

5

Halgrim Halgrim Breie

Inland

1

3

0

5

9

182

5

ewelina.piotrowska

Świętokrzyskie

1

3

0

2

7

14

5

Hannarilina Hannarilina Honkanen

Central_Finland

1

0

0

2

5

25

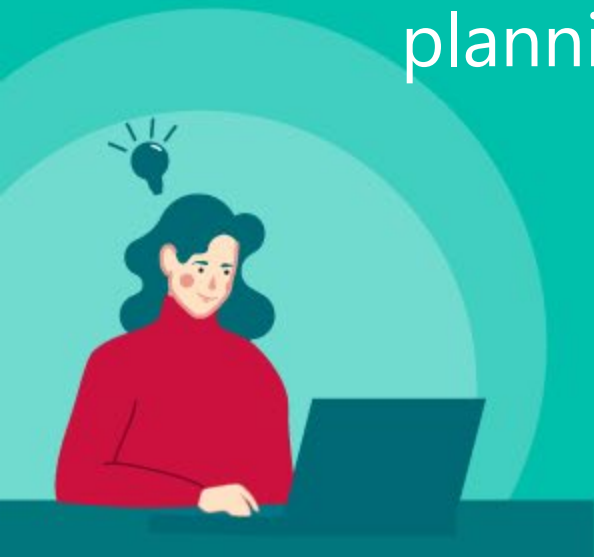
5

Forum – Groups & Network Building

Closed groups can be established for defined list of members. The closed groups can have their own discussion areas on the Forum for project management or e.g. planning a new project proposal.

Open Groups can be used to establish a openly visible list of members for a discussion area.

Both in Open and Closed groups, a **group tag** will help to communicate with the group in the forum or via private messages.



Document Management System

- In Biobord, DMS is a resource library that connects to the Forum categories, providing a resource **cabinet** for Forum categories to store, share and manage the documents related to the activities of the forum category.
- Resources that can be shared and stored include **documents, presentations and pictures**.
- DMS also features same **tags** that are used in the Forum for identification of resources.
- All registered users have rights to view and share documents in the cabinets where they have user rights.
 - Open cabinets are open to all users
 - In Closed Groups only the members can see and create content



Final Piloting of Service Paths with the Biobord User Community

Project Lifecycle
Network building
Matchmaking
Capacity building
Connections to innovation support



Biobord Operating Model 2.0

Available at [Biobord.eu](https://biobord.eu)

- Management document 1: Terms of Service
- Management document 2: Privacy Policy
- Management document 3: Data Balance Sheet
- Management document 4: Quality Assessment Checklist for Service Cards
- Guide 1: Innovation Hub Design
- Guide for New Members Guide 2: Service Path
- Guide for Biobord Members Guide 3: Communication Guide for Biobord Members
- Guide 4: Platform Guide for Registered Users
- Biobord Manual 1: Keycloak User Account Management System
- Biobord Manual 2: Wagtail Content Management System
- Biobord Manual 3: Forum
- Biobord Manual 4: Document Management System

Biobord Staff

Biobord staff will facilitate and activate the Biobord Forum in the piloting round JAN 15- APRIL 15.

Aim

400 registered users

40 SMEs benefitted



Welcome New Users

- Guidance on use of services
- Tutorials
- Connections

Activate Forum Dialogue

- React
- Initiate
- Connect
- Show an example

Activate Networks

- Marketing to regional networks
- Tutoring colleagues
- Facilitating regional user cases

Pilot Coordination

- Collection and sharing of best practices and success stories
- Feedback collection and analysis from regional pilot cases



BIOBORD
PLATFORM



Let us think of the innovation potential here.

If you have 400 talented individuals, there is a potential to build more than 10.5 million different types of teams of three people.

Biobord Staff

Finland:

Ms. Riikka Kumpulainen (the admin): [@riikkakumpulainen](#)

Ms. Tiina Tarvainen: [@tiina](#)

Norway:

Ms. Ingrid Hvidsten Gabrielsen: [@ingrid](#)

Mr. Halgrim Breie: [@halgrim](#)

Poland:

Ms. Monika Malanowicz: [@monikamalanowicz](#)

Ms. Ewelina Piotrowska: [@ewelina.piotrowska](#)

Latvia:

Ms. Inese Suija-Markova: [@inese](#)

Mr. Kristaps Rocans: [@kristaps.rocans](#)

Estonia:

Ms. Kaidi Kaaret: [@kaidi](#)




BIOBORD
PLATFORM




Biobord Staff and Administrators on Call!

Biobord User Support

Helpdesk to Report a Problem




all categories ▾ **Categories** Latest

Online (4): 

Category Topics Latest

Biobord User Support	3	🚩 Biobord Operating Model 7d 🚩 Welcome to Biobord Forum! Feb '19 How to use Tags in Biobord Forum? 11d
-----------------------------	---	--

 Find user guides, tutorials and tips for forum co-working here. Please share your questions and feedback on using Biobord Forum; our Biobord Staff is committed to answering to your questions as soon as possible.

Planned Upgrades

New sign-in options

LinkedIn

Google account

To be launched by February
2020.



Planned Upgrades

<https://www.askkauko.com/>

Interactive, visual impact story
of the pilot cases implemented
in the Biobord network.

To be launched by April 2020.



Building a Sustainable Co-operation Partnership

Biobord Network Agreement

Platform management and
technical support model

Updated Network Action Plan

To be launched by September
2020.





BIOBORD
PLATFORM



See you at biobord.eu!

BIOBORD ADMINISTRATOR

Riikka Kumpulainen

Project Manager, JAMK University of Applied Sciences

Biobord: @Riikkakumpulainen

Email: Riikka.kumpulainen@jamk.fi

Mobile: +358 50 5759 454

BIOBORD ADMINISTRATOR

Antti Häkkinen

Biobord ICT specialist, JAMK University of Applied Sciences

Biobord: @antti

Email: antti.hakkinen@jamk.fi

Mobile: +358 50 445 4422